



IP Cam System User's Manual

SEC-CAMIP30
SEC-CAMIP40
SEC-CAMIP40EC

Index

1. IPCAM system	1
1.1 How to install	1
1.2 How to Add a device into IP Cam System.....	3
1.3 Video via Internet	4
1.4 How to use IP Cam System.....	6
2. Search Tool	13
2.1 How to use Search Tool	13
2.2 Connect IP Cam and computer	14
3. IP Cam Mobile	16
<input type="checkbox"/> Video monitoring on iPhone.....	16

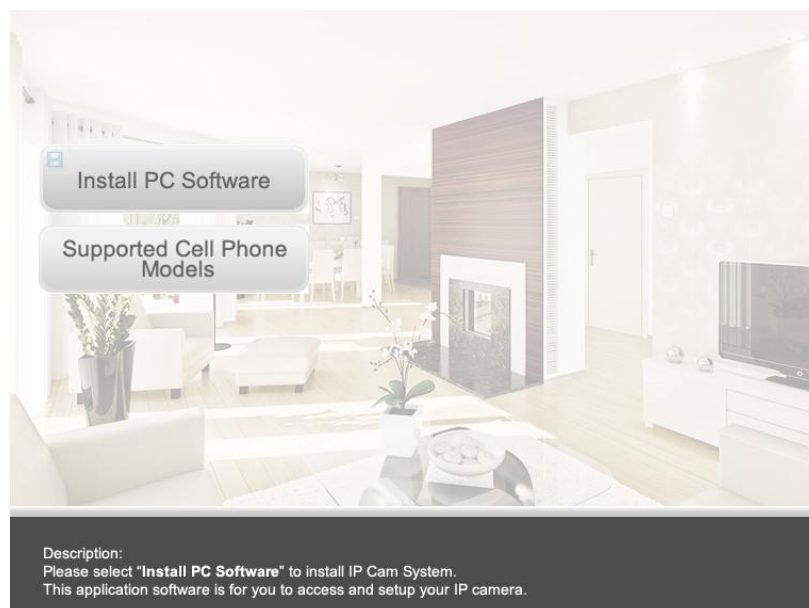
1. IPCAM system

1.1 How to install

Insert the software CD to your CD-R device, start the installation according to your language.
Or check the disc content and click the "**startup.html**" file to open the start up page.



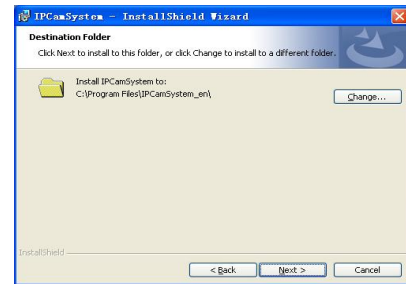
After you have selected English as your language, select "**Install PC Software**" then follow the steps below to complete the installation.



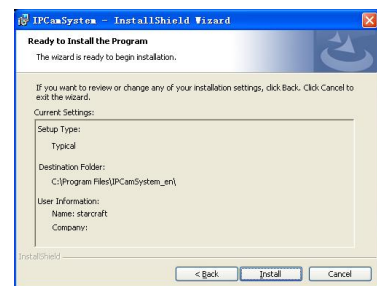
1.1.1 Click "Next" to start the installation.



1.1.2 Click "Next"

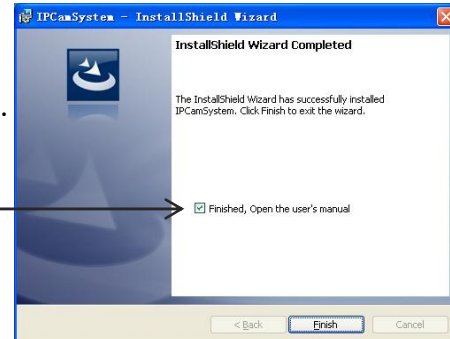


1.1.3 Click "Install"




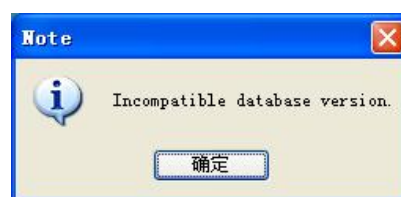
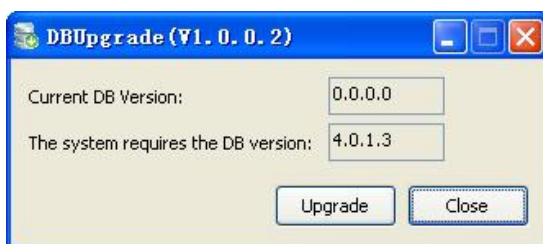
1.1.4 Click "Finish" to complete IP Cam System installation.

Check the Finished box if you wish to run **User's Manual** automatically.
Note: Adobe Reader is needed




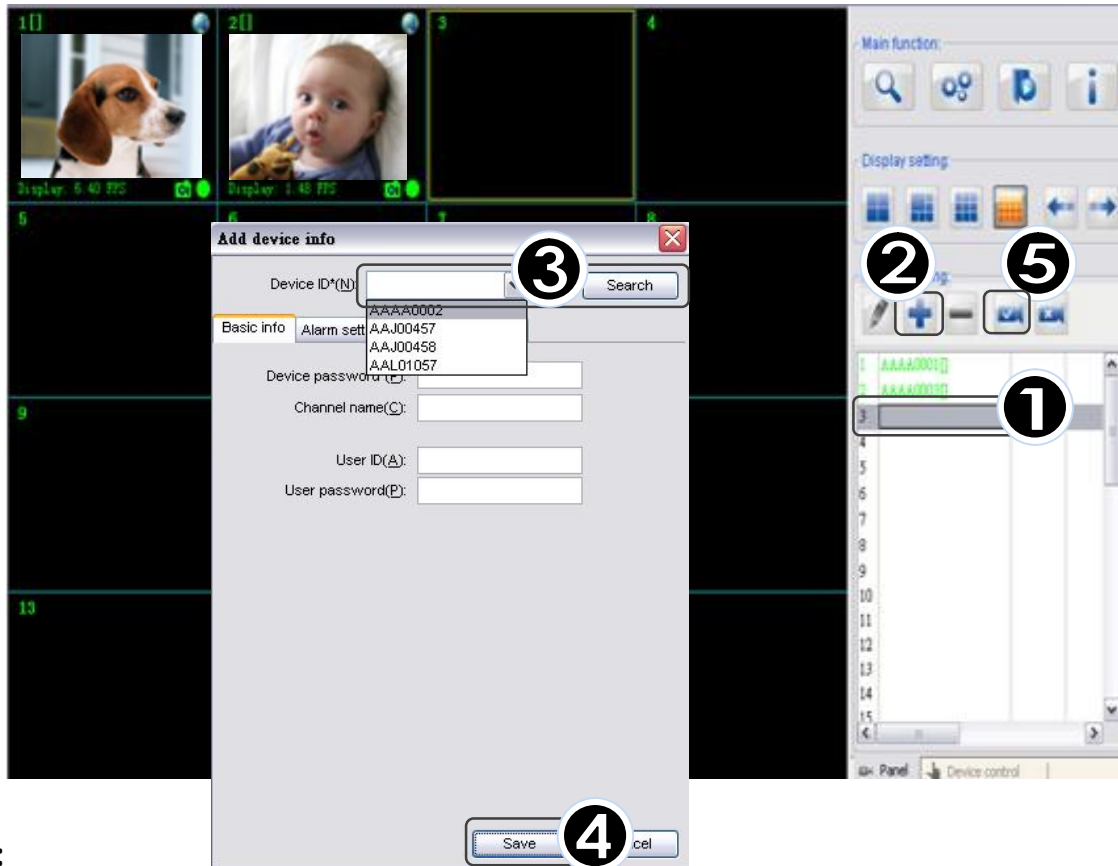
Run DB Upgrade Tool to check if your application is ready for an upgrade. Click Upgrade if it prompts "Incompatible database version" as figure. Then close DB Upgrade Tool and restart IP Cam System.

 **Tips:**
Start Menu → All Programs → IP Cam System → DBUpgrade Tool



1.2 How to Add a device into IP Cam System

- 1 Select an empty channel
- 2 Click 「 Add a device」
- 3 Press 「Search」 or type in ID and Password of your device
(Note!! 「Search」 function can be used under local network only)
- 4 Press 「Save」
- 5 Click 「Start all cameras」 in IPCam setting




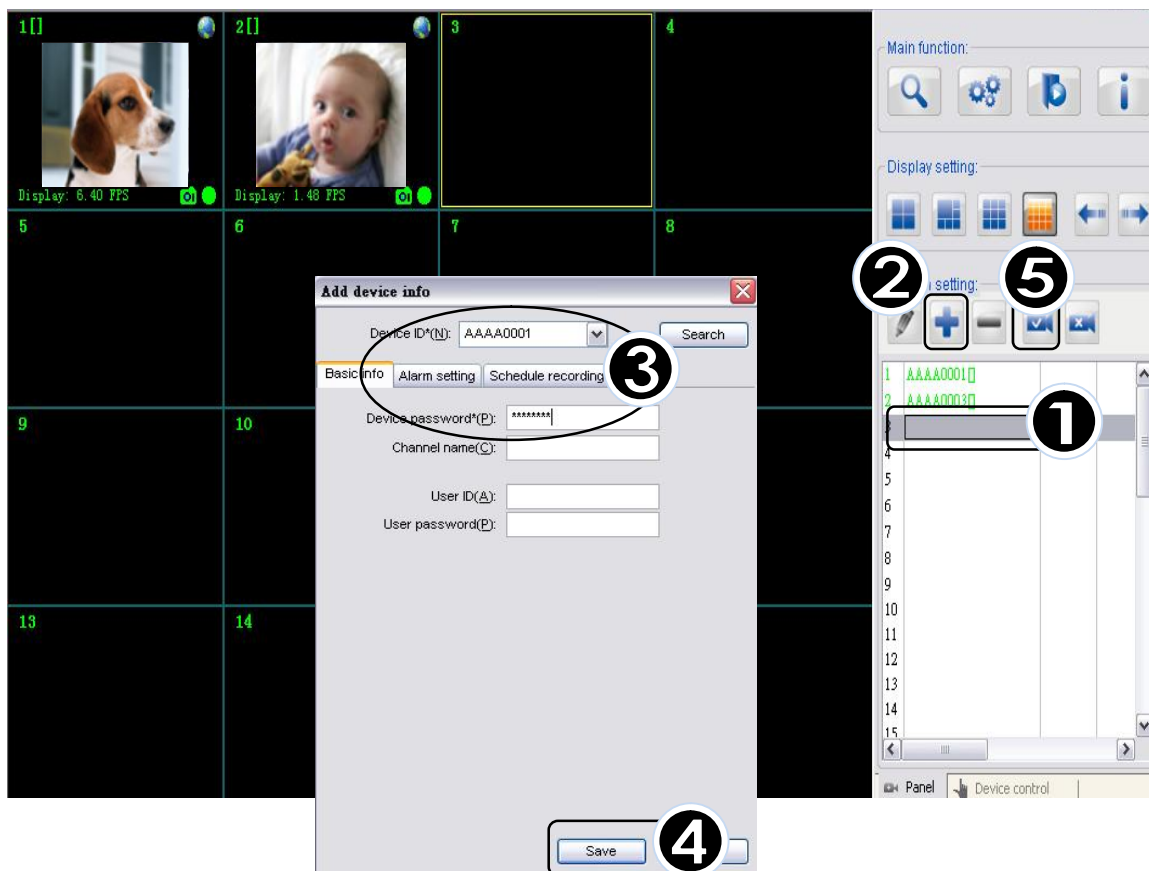
Notice:

1>Device can be searched automatically. Please check the Homeplug LED signal if no device found (only SEC-CAMIP40, SEC-CAMIP40EC)

2>If the device is automatically searched, the User ID and User Password fields must be set before saving. And, the specified ID & Password will update the original ID & Password.

1.3 Video via Internet

- 1 Select an empty channel
- 2 Select 「 Add one device」
- 3 Type in your Device ID/Password」 (Printed on the product body)
Type in your 「User ID/Password」 (Set up by user, can be edited, please refer to Search Tool)
- 4 Press 「Save」
- 5 Click 「Start all cameras」 in IPCam setting



Notice: Make sure the camera is connected to the internet if failed to load video.

If the problem still can't be solved, follow the steps below and provide the information to your supplier.

The image shows a video management interface with a grid of 16 channels. Channel 1 shows a video feed of a dog. A context menu is open over channel 1, listing options: Disconnect, Stretch video, Edit device..., Delete this device, Snap shoot... (F2), and Manual recording (F4). A callout box with a '1' points to the menu, with the text 'Right click mouse on the display channel'. A 'Trouble Shooting Tool' button is highlighted with a callout box with a '2' and the text 'Select TST'. The 'Trouble Shooting Tool (V1.0.0.10)' window is open, showing fields for Device ID* (AAAA0002) and Device Password* (*****), a Detect button, and a text area with the following content:

Result detected:
DeviceID(AAAA0002): Detected at 2010-08-21 08:49:22.

Conclusion: This device didn't login to p2p server in the past 15

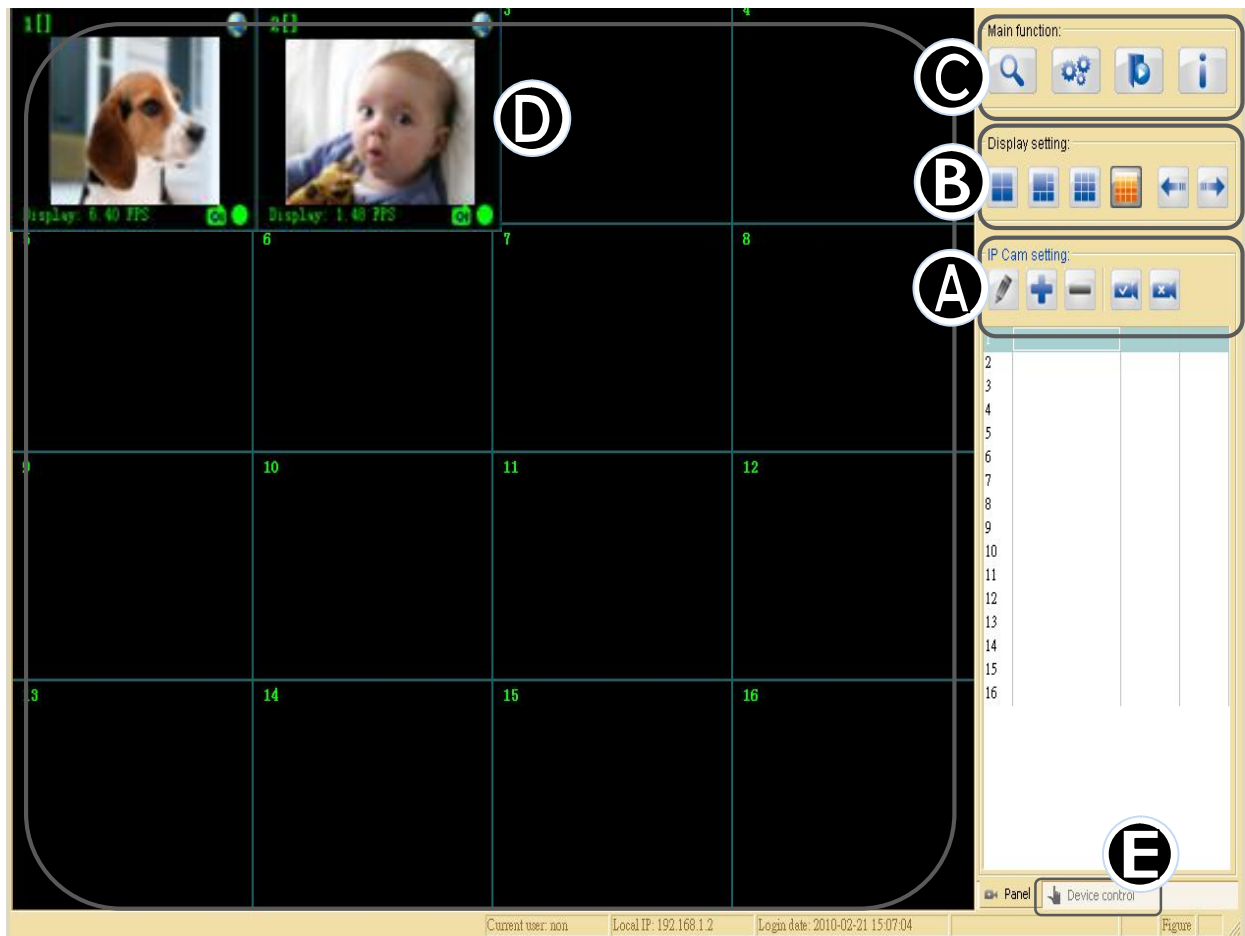
[IPCamSystem ver] 4.0.1
[OS ver] Microsoft Windows XP Professional Service Pack 3
[DirectDraw features] Yes

[Information of device]
FVersion: 35
NATType: (unknown)
LastLoginToNow: 15245 s (about 4 hours, 14 minu)

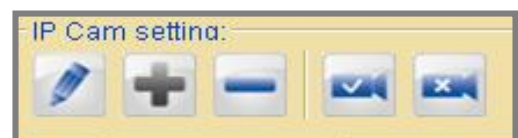
[Information of IPCamSystem]
NATType: type1







At the bottom of the window are an FAQ link and an Exit button. A callout box with a '3' points to the text area, with the text 'Provide the information to your supplier'. The background interface includes a right-hand control panel with sections for Main function, Display setting, and IP Cam setting, and a table with columns for device ID and status.

1.4 How to use IP Cam System



A. IP Cam Setting :



-  **Edit Device Setting :**
Edit device Basic Info/Alarm Setting /Schedule recording
-  **Add one device :**
Add a new device on display channel.
-  **Delete selected device :**
Delete the selected device from display channel.
-  **Start all cameras :**
Start all connection with camera device.
-  **Stop all cameras :**
Stop all connection with camera device.
-  **Edit Device Setting :**
Edit device Basic Info/Alarm Setting /Schedule recording

Basic Info

- **Device ID:** Each individual ID shown on back of IP Cam
- **Device Password:** Each individual password shown on back of IP Cam
- **Channel Name:** Edit camera name.
- **User ID/User Password**
Each user's personal ID and password



Alarm Setting :

After selecting Enable Alarm, click Motion detection setting to adjust the sensitivity and Email setting.

- **Enable Alarm**
Set to "Full time alerted" or "Schedule alert"
- **Motion detection**
Click "Setting" to adjust motion detection sensitivity


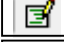



- **Alarm Methods**
Alarm sound/Snap shot/Recording/Send Email
- **Email setting:**
Refer to your outlook account information of SMTP/Account/Password.

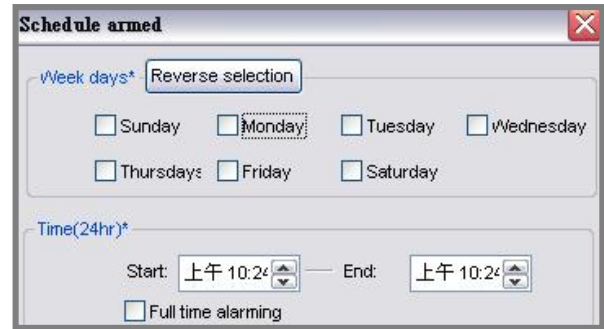
Week	Start	End	Trigger method	Alert method

Note! Email alert can work properly only when Internet is connected




➤ **Schedule Alert**

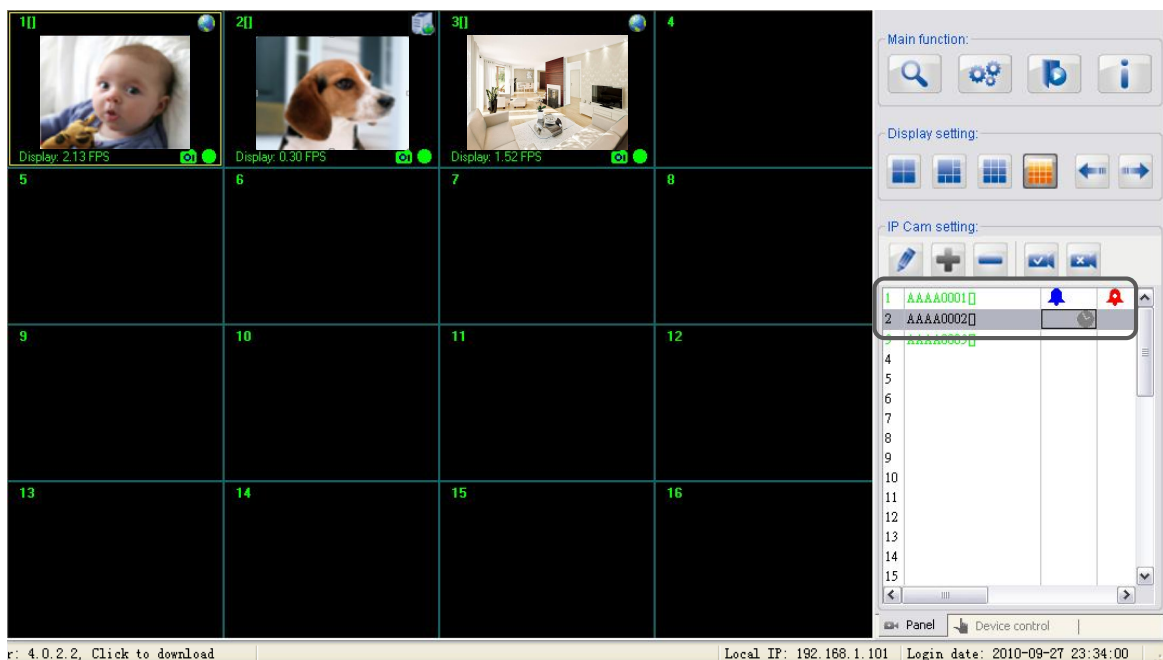
-  **Add one duration**
-  **Edit selected duration**
-  **Delete selected duration**

Select "Add one duration" to schedule alarm
Set days and time or full time alarming






The icons below shows the status on this device

-  **Alarm has been enabled**
-  **Alarm detected on channel**
-  **Schedule recording**

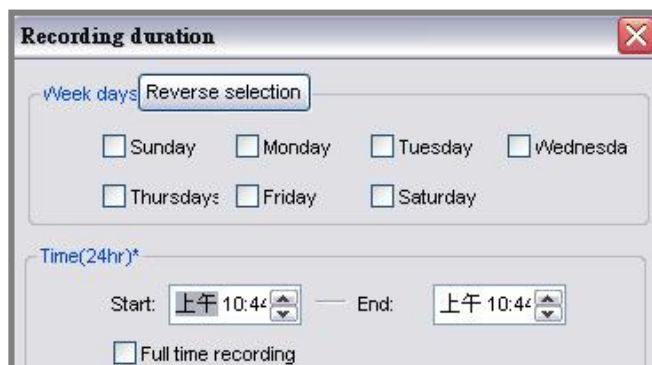
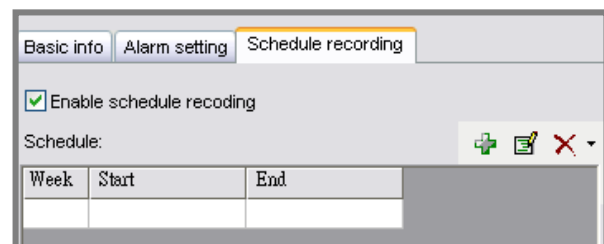


Schedule Recording :

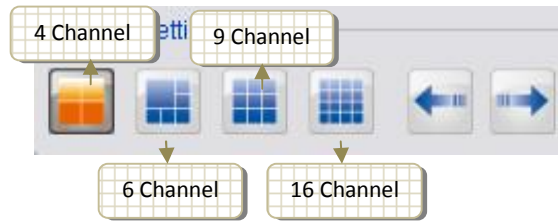
➤ **Select enable schedule recording**

-  **Add one duration**
-  **Edit selected duration**
-  **Delete selected duration**

Select "Add one duration" to schedule recording
Set days and time or full time recording



B. Display Setting



Full Screen Mode:

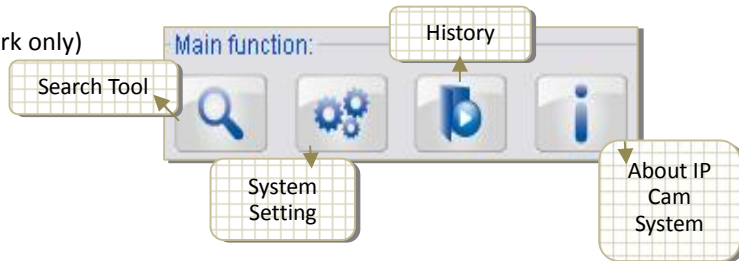
Double left click mouse of selected channel to switch to full screen mode, double left click again to switch back.

C. Main function



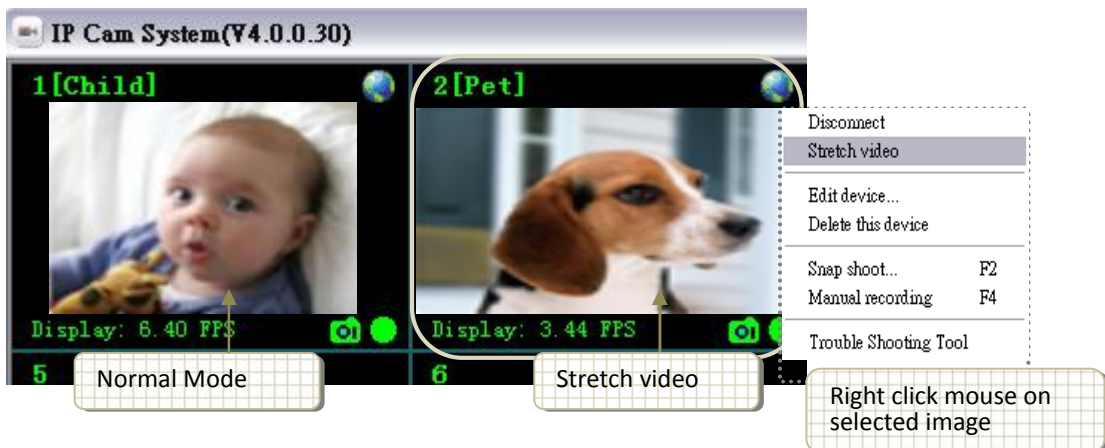
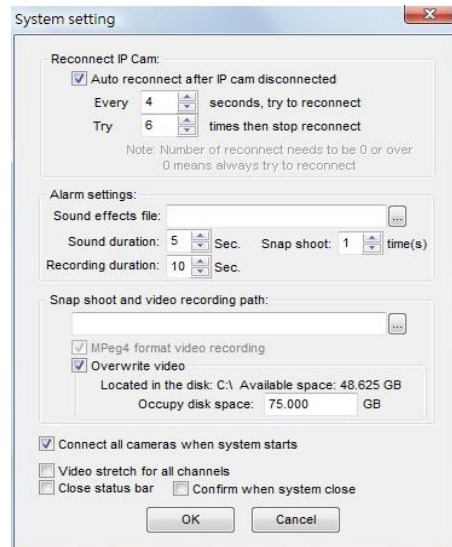
Search Tool :

Use to set up IP Cam (Local network only)

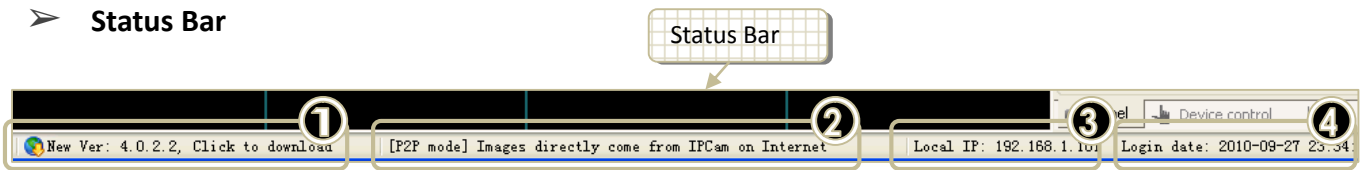


System Setting :


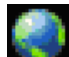

- **Reconnect IP Cam :**
Auto reconnects IP Cam when disconnected.
- **Alarm Setting**
Sound effects file :
Select your preferable sound when alarming.
- **Snap shot and video recording path:**
Setup save folder for the recorded files and snapshots.
- **Overwrite video :**
Set up the occupy disk space.
- **Set up the system start status:**
video stretch/status bar/confirm when system close
- **Stretch Video**



➤ **Status Bar**



- ❶ When new version is available, this field will show it. Click to enter download page.
- ❷ This field shows the link mode of specified video channel. It is a texture description of the icon on the up-right corner of video display. :

- [LAN Mode] Your PC and IPCam are on local area network. (icon )
- [P2P Mode] Images directly come from IPCam on Internet. (icon )
- [Relay Mode] Images go through relay server. Slow frame rate. (icon )

- ❸ This field shows PC's IP.
- ❹ This field shows the date and time when IPCam executed.

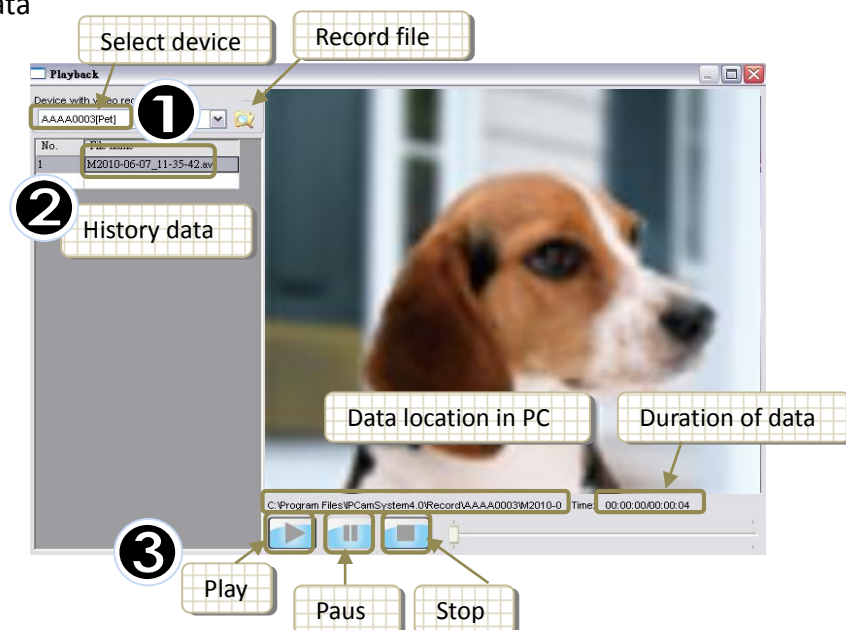
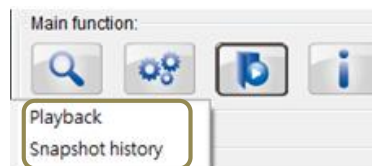
➤ **Confirm when system close**



 **History of video/ snapshot :**

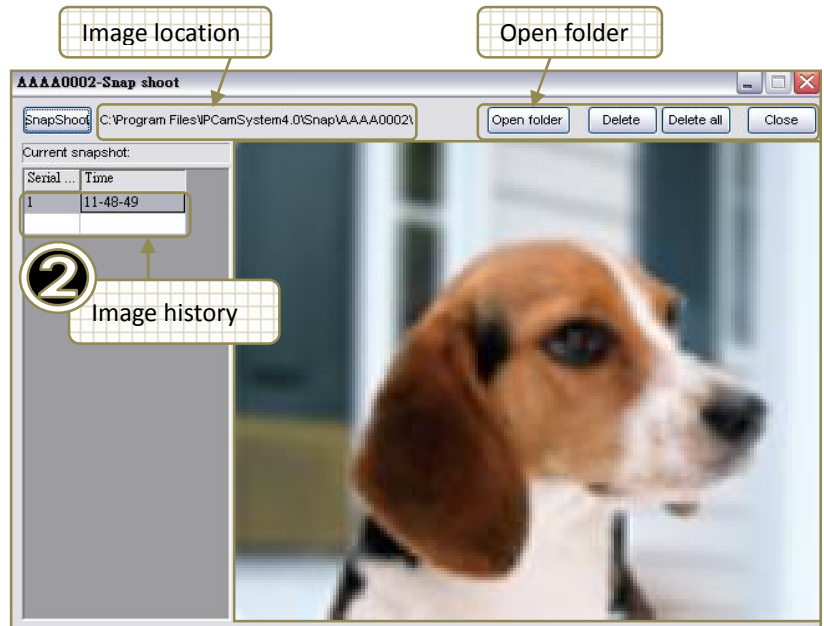
Playback video

- ❶ Select device
- ❷ Choose history data
- ❸ Playback back



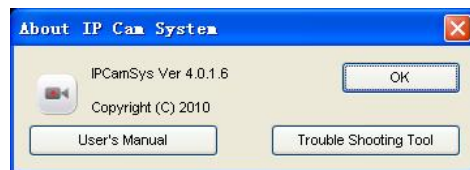
History of snapshot

- ❶ Open snapshot folder or delete image
- ❷ Select image

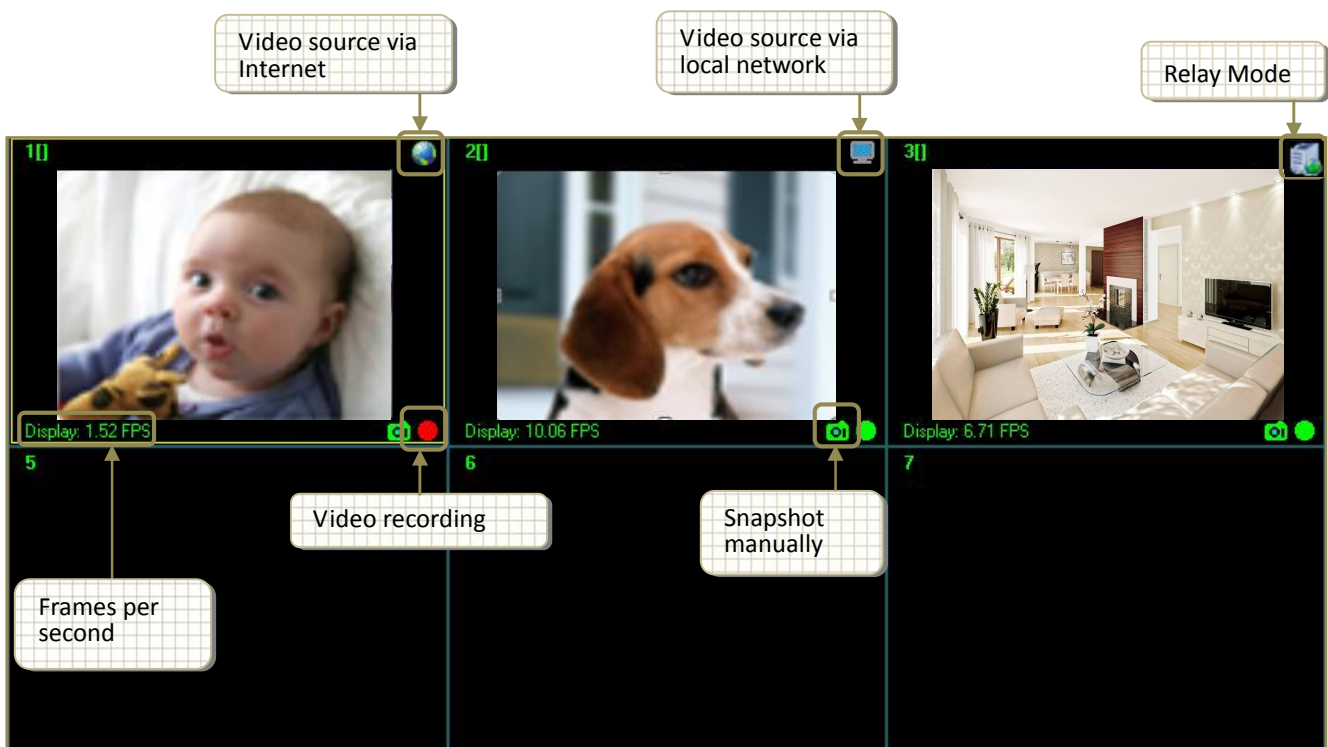


About IP Cam System :

Version of your IP Cam System and User's Manual.



D. Display Channels :



Shortcut function:

Right click on the display channel

- **Disconnect :**
Disconnect the device.
- **Stretch video :**
Stretch video display.
- **Edit device :**
Edit device Basic Info/Alarm Setting and Schedule recording.
- **Delete this device :**
Delete the selected device.
- **Snapshot :**
Take picture of the selected device.
- **Manual recording :**
Start recording instantly.



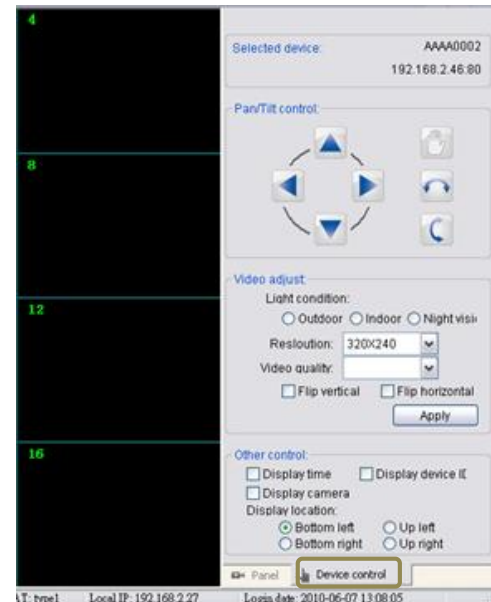
E. Device Control

- **Selected device :**
Shows the IP address/ Device ID of the selected camera
- **Pan/Tilt Control**
For control the camera angle. (For selected model only)
- **Video adjust :**
Adjust light condition/resolution/video quality.

Light condition: Indoor/Outdoor/Night vision

Resolution : 640*480/320*240/160*120

Video quality: From highest to lowest



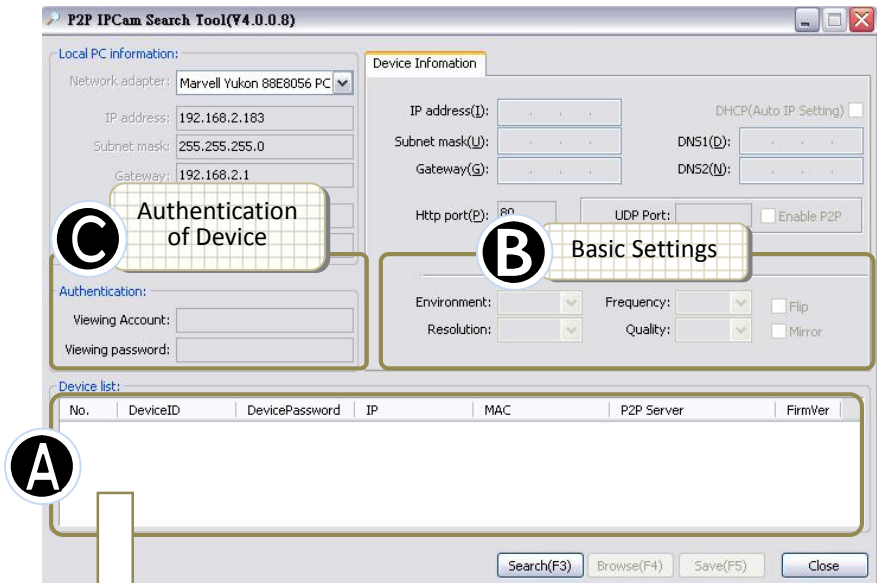
2. Search Tool

2.1 How to use Search Tool

Click "IPCAM Set up"

Search Tool helps setting up your IP cam directly.

Note! This software can be operated under the local network only



A. Device List

No.	DeviceID	DevicePassword	IP	MAC	P2P Server	FirmVer
3	AAAD1057	11888643	192.168.2.23	00:60:6E:51:74:C2	www.p2pipcam.com	
4	AAJ0045		29	00:60:6E:51:45:B4	www.p2pipcam.com	
5	AAJ00458		26	00:60:6E:51:44:8C	www.p2pipcam.com	

Callout 1: Search for cameras under local network (points to Search(F3) button)

Callout 2: Info of camera found (points to row 3)

Callout 3: (points to Browse(F4) button)

Note: In this preview window, all the changes are directly saved to your camera.

- **Brightness**
Select brightness by clicking on "Low", "Standard", or "High".
- **Quality**
"+ ": for clear picture and bigger file size
"- ": for less picture quality and smaller file size
- **Environment**
Please select the "Indoor" or "Outdoor" or "Night" mode, depending on the environment condition.
- **Position: Normal/Flip/Mirror**



B. Basic Settings

Environment: Night/ Indoor/ Outdoor

Frequency: 50 Hz or 60Hz based on your AC power’s frequency.

USA and countries in South America: 60Hz

Taiwan: 60Hz

Japan: 50Hz / 60Hz both

Most of countries in European / Middle East / Africa: 50Hz

C. Authentication

Set up your personal account and password. Once been set, It can only be changed or deleted under local network.

Notice: User Authority is for the security use, we strongly suggest you to set up your own ID and password once you begin to use the product.

2. 2 Connect IP Cam and computer

Use Search Tool to start the connection

Local PC information:
 Network adapter: Marvell Yukon 88E8056 PC
 IP address: 192.168.2.183
 Subnet mask: 255.255.255.0
 Gateway: 192.168.2.1
 DNS1: 168.95.1.1
 DNS2:

Authentication:
 Viewing Account:
 Viewing password:

Device Information:
 IP address(I): 192.168.2.30
 Subnet mask(U): 255.255.255.0
 Gateway(G): 192.168.2.1
 Http port(P): 21042
 UDP Port: 28580
 Enable P2P
 Enable UPNP
 Environment: Night
 Frequency: 60Hz
 Resolution: 320x240
 Quality: Middle
 Flip
 Mirror

Device list:(5 pcs)

No.	DeviceID	DevicePassword	IP	MAC	P2P Server	FirmVer
1	AAAA0002	12345678	192.168.2.30	00:60:6E:51:79:42	www.p2pipcam.com	35
2	AAJ00458	86356283	192.168.2.26	00:60:6E:51:44:8C	www.p2pipcam.com	30
3	AAJ00457	58156807	192.168.2.29	00:60:6E:51:45:B4	www.p2pipcam.com	31

1 Search(F3) **3** Disable Auto DHCP Setting **4** Device Information **5** Close

❶ Please click "search", then select an "IP cam" on the list.

No.	DeviceID	DevicePassword	IP	MAC	P2P Server	FirmVer
3	AAL01057			:60:6E:51:74:C2	www.p2pipcam.com	34
4	AAJ00457			:60:6E:51:45:B4	www.p2pipcam.com	31
5	AAJ00458			:60:6E:51:44:8C	www.p2pipcam.com	30

Search(F3) Browse(F4) Save(F5) Close

❷ Make sure the IPs of LAN and IPCAM are the same, except the last block

Local PC information:

Network adapter: Marvell Yukon 88E8056 PC

IP address: 192.168.2.183

Subnet mask: 255.255.255.0

Device Information

IP address(I): 192.168.2.30

Subnet mask(U): 255.255.255.0

Changing IP Address in Windows

Click Startbutton → Right click My Network Places icon → click Properties → Right click Local Area Connection icon → Click Properties → click Internet Protocol[TCP/IP] icon → click Properties

1

2

3

4

5

6

7

8

3. IP Cam Mobile

Please download the dedicated video monitoring software for Apple OS4 and Android operation system. For further detail please visit web page as below:

<http://www.p2picam.com/3g>

All other Smart Phones users please use web browser to visit Allmycloud server as below:

<http://www.allmycloud.com>

Please refer to the example for iPhone as below and refer to the user's manual of your phone for more operation details.

- **Video monitoring on iPhone**

To use the App Store, iPhone must be connected to the Internet.

P2P IPCam Lite is free; you can download it without charge.

Once you download it, it's immediately installed on your iPhone. Then follow the steps below:

