



CMP-USBHDMI10



MANUAL (p. 2)
USB to HDMI converter with audio

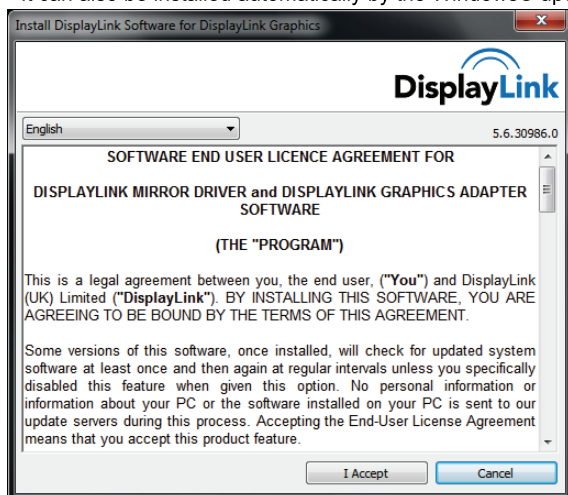
ENGLISH

Resolution information:

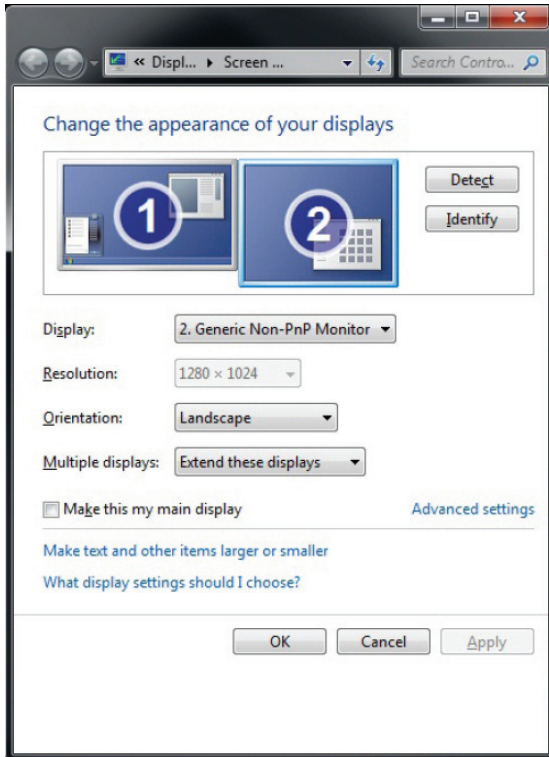
Resolution	Standard screen (4:3)	Resolution	Wide screen (16:9)
	Refresh rate at 32-bit colour		Refresh rate at 32-bit colour
640x480	60/72/75/85	1280x720	60
800x600	56/60/72/75/85	1280x768	60/75/85
1024x768	60/70/75/85	1280x800	60
1280x960	60/85	1360x768	60
1400x1050	60/75/85	1440x900	60
1600x1200	60	1680x1050	60
		1920x1080	60

Installation on a Windows® OS:

- The driver can be installed from the driver CD (see picture below).
- It can also be installed automatically by the Windows® update.



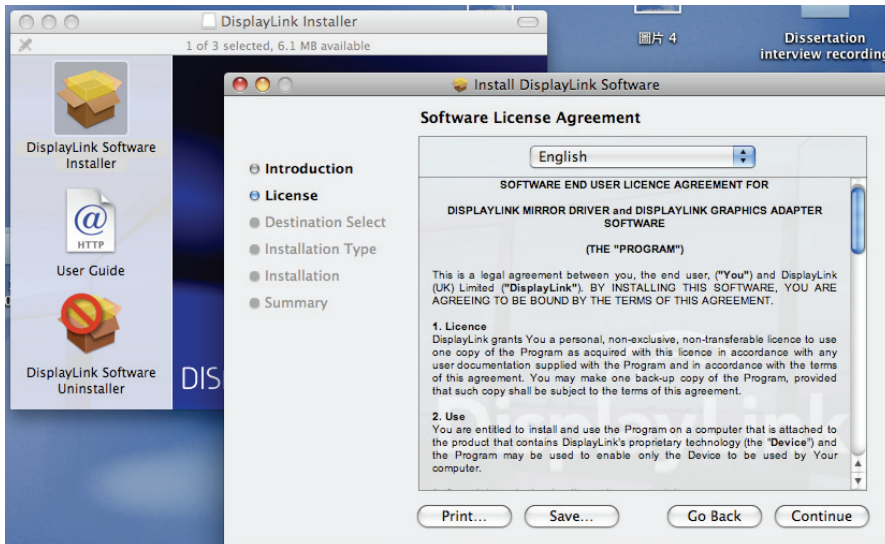
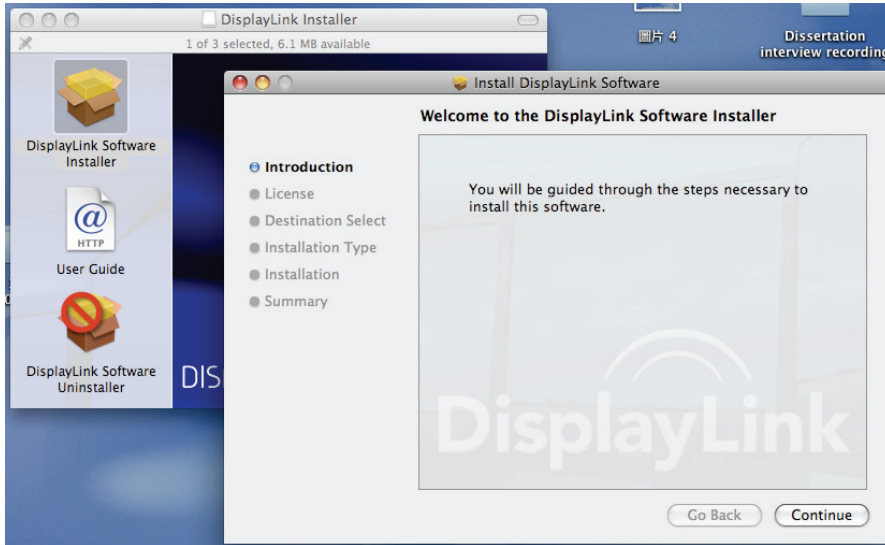
- The Display link software will be fully integrated in the Windows® control panel (see picture).

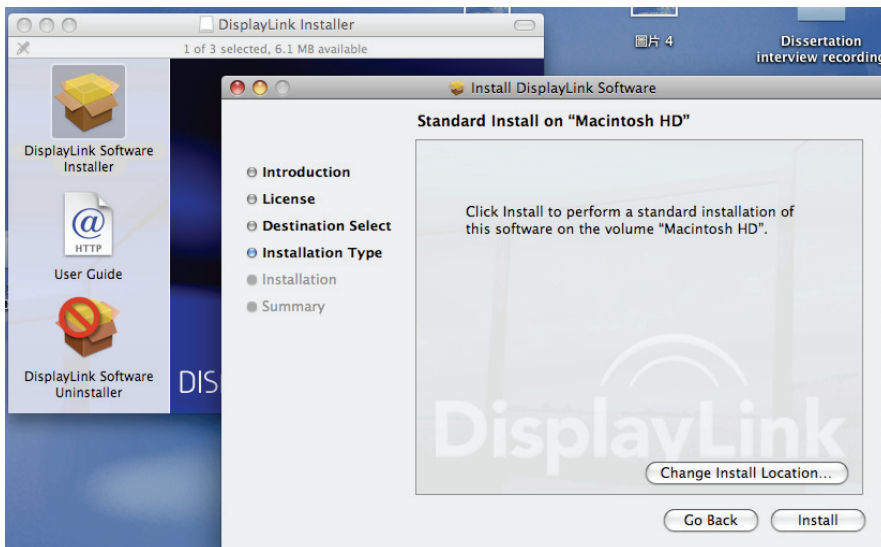
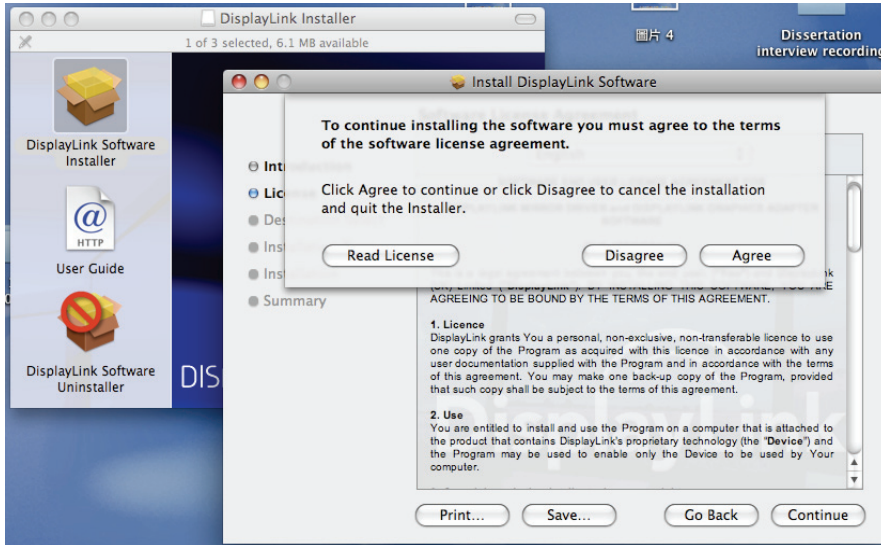


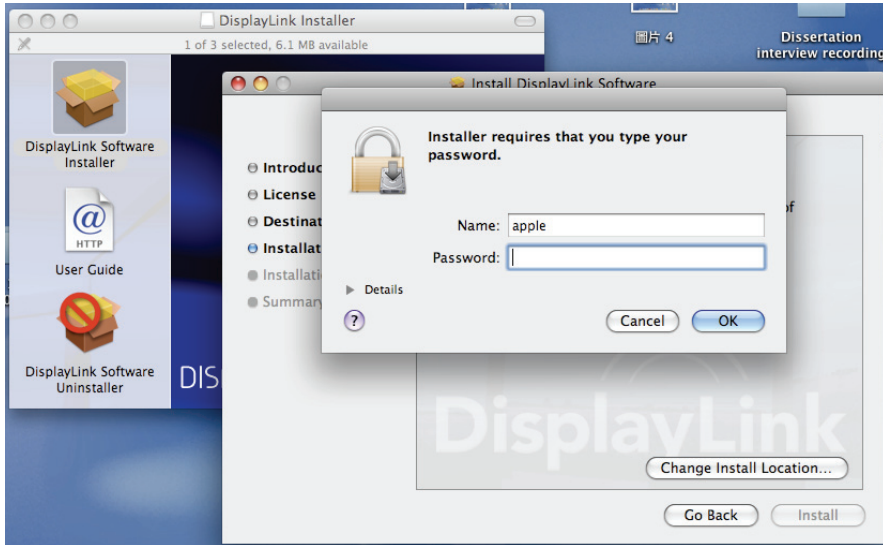
Installation on a MAC® OS:

- The driver can be installed from the driver CD (see picture below).

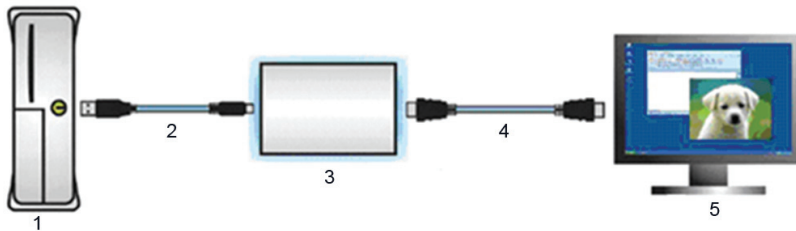






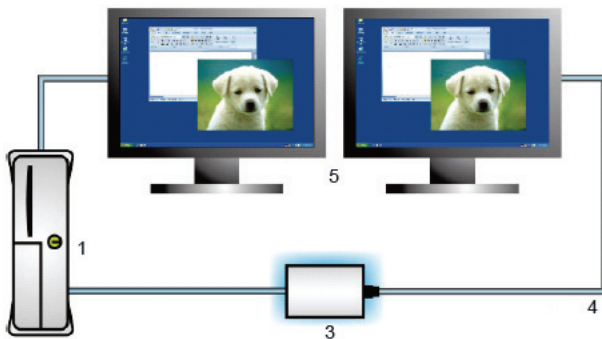


Connection diagram:

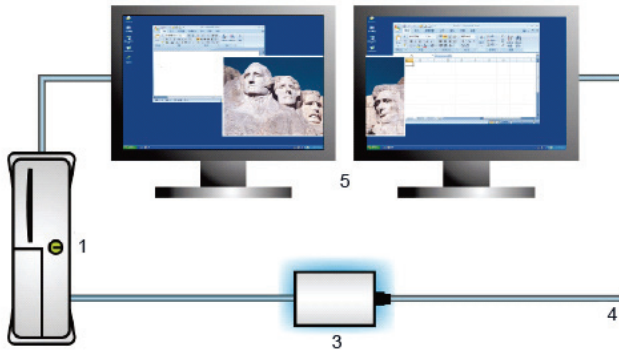


- You can use the adapter to use your display in mirror mode and you can use it to extend it.

Mirror mode:



Extend mode:



1. PC/notebook
2. USB cable
3. USB to HDMI adapter
4. HDMI cable (excl.)
5. LCD/monitor (HDMI)

Note: It's also possible to use the CMP-USBHDMI10 with any display with a DVI connection. Therefore you can use the optional HDMI to DVI adapter.

Safety precautions:



CAUTION
RISK OF ELECTRIC SHOCK
DO NOT OPEN



To reduce risk of electric shock, this product should **ONLY** be opened by an authorized technician when service is required. Disconnect the product from mains and other equipment if a problem should occur. Do not expose the product to water or moisture.

Maintenance:

Clean only with a dry cloth. Do not use cleaning solvents or abrasives.

Warranty:

No guarantee or liability can be accepted for any changes and modifications of the product or damage caused due to incorrect use of this product.

General:

Designs and specifications are subject to change without notice.

All logos brands and product names are trademarks or registered trademarks of their respective holders and are hereby recognized as such.

Keep this manual and packaging for future reference.

Attention:



This product is marked with this symbol. It means that used electrical and electronic products should not be mixed with general household waste. There is a separate collections system for these products.



Declaration of conformity

We
Nedis B.V., De Tweeling 28, 5215MC, 's-Hertogenbosch
The Netherlands
Tel.: 0031 73 5991055
Email: info@nedis.com

Declare that product:

Brand: **KÖNIG ELECTRONIC**
Model: **CMP-USBHDMI10**

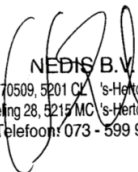
Description: USB to HDMI converter with audio

Is in conformity with the following standards:

**EN55022:2006/A1:2007 Class B, EN61000-3-2:2006, EN61000-3-3:2008,
EN55024:1998/A1:2001/A2:2003 (IEC61000-4-2:2008, IEC61000-4-3:2006/A1:2007/A2:2010,
IEC61000-4-4:2004, IEC61000-4-5:2005, IEC61000-4-6:2008, IEC61000-4-8:2009,
IEC61000-4-11:2004)**

EU Directive(s): **2002/95/EC, 2004/108/EC**
's-Hertogenbosch, **20-4-2011**

Mrs.: **J. Gilad**
Purchase Director


NEDIS B.V.
Postbus 70509, 5201 CZ 's-Hertogenbosch NL
De Tweeling 28, 5215 MC 's-Hertogenbosch NL
Telefoon: 073 - 599 96 41

Copyright ©