



SC012 Sweex 5.1 PCI SOUND CARD

Installation of hardware

Take the following precautionary measures prior to installing the hardware:

1. Ensure the PC is switched off and disconnected from the mains.
2. Also, disconnect the printer and monitor cables (they have their own power supplies) to make absolutely sure the PC is not live.
3. Now unscrew the computer casing.
4. Subsequently, remove any static electricity you may carry on your body. Do this by touching a (neutral) pipe of the central heating system or an unpainted water pipe, among other things. Please note that you must not use a magnetic screwdriver for this. Before you proceed any further, briefly touch the iron frame of the PC casing. Make sure that you minimise contact with any contact points of the PC, PC Card or the memory.
5. Find a vacant PCI slot and remove the metal guard plate part of the computer casing in front of the relevant slot. On occasion the card does not allow for it to be inserted in the PCI slot smoothly. Should this be the case, do not force anything, but try another available slot.
6. Once the card has been successfully installed, check whether all other cards are still properly inserted in the PCI slots. It is possible that the other PCI cards are lifted up slightly when installing a new PCI card; as a result, the relevant cards or even the entire PC may no longer operate correctly.
7. Replace the casing on the computer base and correctly reconnect all cables.
8. Switch on the PC again.

Installation

When starting up the PC, Windows will recognise the Sound Card and the following screen will appear.

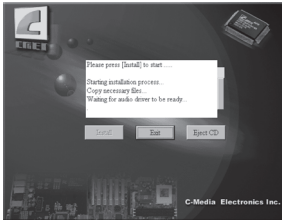


Here click "Cancel" (Cancel).

After the PC has started up, insert the Sweex CD-ROM in the CD player. If you have already done so, open the CD-ROM player and close it again. The CD-ROM will start automatically. Click on "Driver" to start the driver installation process.

Driver Windows

The following window appears.

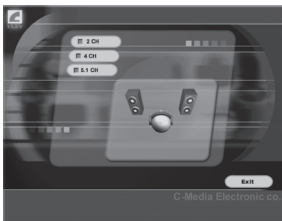


Subsequently, you will be prompted to restart the PC.



Here, select: "Yes, I want to restart my computer now" (Yes, I want to restart my computer now).

Having restarted the PC, the following screen will appear.



Select the number of speakers you wish to connect to the Sound Card. Now click "Exit" (Exit). You can now start using your Sweex 5.1 PCI Soundcard. In order to set the sound card, you can use the Mixer icon that will appear in the right-hand bottom of your screen.

Audio inputs/outputs

MIC IN:	- microphone in
LINE IN:	- input for external signal
CE/SW OUT:	- centre/subwoofer output
REAR:	- rear output
FRONT:	- front output

Warranty

All products under the Sweex brand are warranted for a period of three years. We do not grant support or warranties for any software and/or (rechargeable) batteries included. Warranty claims are only settled via the dealer where the product concerned was purchased.

The rightful owner has and retains title to all brand names and related rights mentioned in this manual.

Warranty

Thank you for purchasing this Sweex product. Sweex devotes ample attention and care to the quality, reliability, functionality, durability and user friendliness of all its products. In this way Sweex distinguishes itself in the market and can we convince you as a buyer to continue purchasing products of the Sweex brand. We wish you a lot of pleasure with your purchase.

An important extra advantage for you is the possibility of product registration.

After the registration of your product Sweex offers you a number of important yet equally useful advantages. The biggest advantage is that by means of the online registration on www.sweex.com/12years warranty the warranty on the product is extended by a 10-year manufacturer's warranty (see the applicable conditions on this website). This in addition to the statutory 2-year warranty which is already available for the product. In total the warranty period will therefore amount to 12 years.

There are also other advantages:

For example, if you wish so, you are regularly informed by us of the latest developments in our assortment by means of a digital newsletter.

Where applicable, you also automatically receive the latest drivers and/or firmware from us for the product you purchased to preserve or improve the compatibility and the performance.

Moreover, our support desk can assist you faster in case of possible support questions about the product if you registered the product.

Sweex warranty conditions.

2-year standard warranty within the EU

- In a standard manner a warranty period of 2 years as from the purchase date is available for this Sweex product within the EU.
- Should you wish to invoke this warranty within the first 2 years after the purchase then you can directly apply to the point of sale where you purchased the product for the conditions and procedures.

10-year manufacturer's warranty

- However, in addition to the statutory 2-year standard warranty Sweex offers you an extended quality warranty of no less than 10 years, if you purchased your product within the EU.
- For more information, conditions and the registration form go to www.sweex.com/12years warranty and register within 30 days after the purchase of your product for the extended warranty period of in total 12 years.

Matters that are excluded from the warranty

- The warranty of Sweex only covers manufacturing defects. Excluded from the warranty are accessories like batteries, rechargeable batteries and also supplied software, where applicable.
- The liability of Sweex is limited to the costs of repair and/or replacement of the product covered by the warranty.
- Both warranty types (the 2-year standard warranty and the 10-year extended manufacturer's warranty) are null and void if the product has been opened, changes have been made, physical damage was caused to the product and if the product is used for another purpose than for which it is originally meant.

All brand names and associated rights mentioned in this manual are and remain the sole property of the rightful claimant.