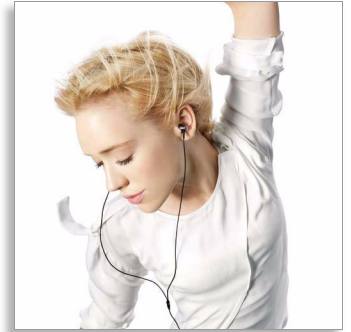


Philips
In-Ear Headphones



SHE9000



Perfect fit, precise sound

Easy grip enables perfect in-ear fit

With a vibration-absorbing metal housing, these high performance speakers create bass fidelity for true-to-life sound. Uniquely curved design enables a perfect fit. Comply™ foam tip for perfect noise isolation. Fabric cable prevents tangle.

Enjoy quality sound

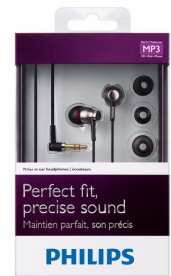
- Premium metal housing offers accurate sound transmission.
- Turbo bass air vents for deepest and richest bass
- Perfect in-ear seal blocks external noise
- Exceptional noise isolation for quality sound at low volume

Ultimate wearing comfort

- Uniquely curved design enables easy grip for perfect fit
- Ultra soft memory foam cushions for great comfortable fit
- Ergonomic Angled Acoustic design ensures a natural fit
- Ultra-soft silicone caps sit comfortably in your ears

Always ready to go

- Fabric covered cable lasts longer and prevents tangling
- Anti-tangle slider
- A 1.2 m long cable that is ideal for outdoor use
- Durable Flexi-Grip makes a strong flexible connection



PHILIPS
sense and simplicity

Specifications

Product dimensions

- Product dimensions (W x H x D):
2.1 x 2.3 x 1.3 cm
- Weight: 0.0119 kg

Sound

- Acoustic system: Closed
- Diaphragm: Mylar dome
- Frequency response: 6 — 23 500 Hz
- Impedance: 16 Ohm
- Magnet type: Neodymium
- Type: Dynamic
- Voice coil: CCAW
- Sensitivity: 102 dB
- Speaker diameter: 10 mm
- Maximum power input: 15 mW

Connectivity

- Connector: 3.5 mm stereo
- Type of cable: OFC
- Cable Connection: two-parallel, symmetric
- Cable length: 1.2 m
- Finishing of connector: Gold-plated

Packaging dimensions

- Type of shelf placement: Soother

- Packaging dimensions (W x H x D):
9.5 x 17.5 x 0.4 cm
- Net weight: 0.0119 kg
- Gross weight: 0.0634 kg
- Tare weight: 0.0515 kg
- EAN: 69 23410 70813 4
- Number of products included: 1
- Packaging type: Soother

Outer Carton

- GTIN: 1 69 23410 70813 1
- Outer carton (L x W x H): 38 x 29.5 x 25.5 cm
- Net weight: 0.2856 kg
- Gross weight: 2.425 kg
- Tare weight: 2.1394 kg
- Number of consumer packages: 24

Inner Carton

- GTIN: 2 69 23410 70813 8
- Inner carton (L x W x H): 18 x 8.5 x 10.5 cm
- Net weight: 0.0357 kg
- Gross weight: 0.247 kg
- Tare weight: 0.2113 kg
- Number of consumer packages: 3

Highlights

Premium metal housing

Housed in superior metal, these earphones are shielded from unnecessary vibration for accurate sound transmission, resulting in smooth bass response and clear mid-to-high-range tones.

For deepest and richest bass

Turbo Bass air vents allow air movement for high-fidelity reproduction of the deepest and richest bass.

Precisely tuned acoustics

Perfect in-ear seal surprises you with exceptional noise isolation

For best sound at low volume

You don't have to turn up the volume in noisy places any more. Angled Acoustic Pipe and the perfectly sealing ear buds cut off background noise significantly, delivering the same quality sound at a lower volume and with a longer battery life.

Uniquely curved design

A unique curved headphone housing design enables easy grip and makes it easy to get perfect in-ear fit - even on the go.

Soft memory foam cushions

Ultra-soft memory foam cushions perfectly shaped around the contours for your ears. This gives you the best fit while you hardly feel them.

Ear fitting design

The design superiority of a slight 15-degree tilt in the Angled Acoustic model based on the anatomy of the human ear achieves a natural fit and supreme comfort.

3-size ultra-soft silicone caps

3 sizes of ultra-soft silicone caps sit comfortably in your ears without adding pressure to them whilst blocking out unwanted noise

Anti-tangle fabric cable

Textile covered cable prevents cable tangling, is very long-lasting and extends product life.

Anti-tangle slider

When storing your headphones there is a risk that the cables tangle if not stored carefully. This makes it a hassle to store the headphones and get them ready for listening. Simply slide the anti-tangle slider towards the earpieces to keep the two earpiece cables neatly together and to minimise the risk of the cables tangling.

1.2 m cable

The ideal cable length to give you the freedom to put your audio device where you want.

Flexi-grip design

The soft flexi-grip material that the body of the headphone is sheathed in enhances its performance and extends its durability. It protects the cable connection from damage that otherwise could occur due to repeated bending of the headphone body from frequent contact with the user's fingertips when being put on and removed.



Issue date 2012-01-20

Version: 3.0.8

12 NC: 8670 000 73469
EAN: 69 23410 70813 4

© 2012 Koninklijke Philips Electronics N.V.
All Rights reserved.

Specifications are subject to change without notice.
Trademarks are the property of Koninklijke Philips Electronics N.V. or their respective owners.

www.philips.com