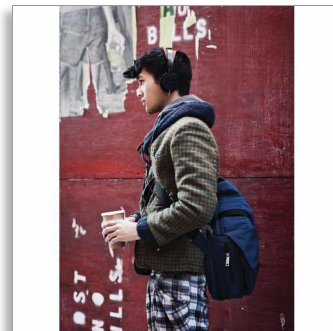




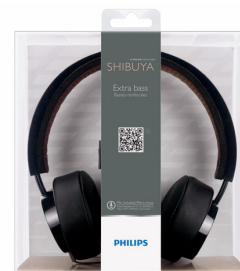
Philips
CitiScape Headband
Headphones

CitiScape collection

SHIBUYA



SHL5205BK



Powered by deep, dynamic bass

with sound-isolating cushions

Japanese pop culture and chic simplicity lend iconic flair to the CitiScape Shibuya. Its lightweight breathable headband with auto-fitting, noise-isolating cushions ensure perfect fit and comfort while you immerse yourself in powerful bass.

Total immersion

- Powerful 40 mm drivers deliver deep and dynamic bass
- On-ear isolating cushions block out the city noise

Supreme comfort

- Soft foam cushions for music enjoyment in true comfort
- Soft breathable headband for long-listening comfort
- Flat 1.2 m anti-tangle cable keeps you kink- and knot-free

Music and calls

- Switch from music to phone calls with built-in microphone

PHILIPS

sense and simplicity

Highlights

Deep and dynamic bass



Get into your groove with music that packs a solid punch, thanks to powerful 40 mm drivers that deliver deep and dynamic bass. With Philips' background in sound excellence, you can trust that your CitiScape headphones will ensure a vividly moving sound experience — wherever you go.

Flat anti-tangle cable



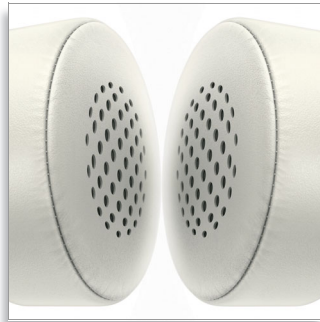
Say goodbye to wrestling with knotted and messy cables in and out of your bag. Your CitiScape headphones' flat 1.2 m anti-tangle cable stays kink- and knot-free—always. Now you can focus on what matters most, like enjoying your music with ease wherever you go.

Soft breathable headband



The soft and lightweight headband is perforated in order to release heat build-up when you're wearing your CitiScape headphones.

Soft foam cushions



Ultra-soft and supple cushions hug the contours of your ears comfortably and securely to form a perfect seal. Not only are they designed to ensure the best possible fit—whatever your head shape, they also let you immerse yourself in music enjoyment for extended periods of time. In fact, they're so comfortable, you may even forget that you have them on.

On-ear isolating cushions



Be part of the city buzz but not its noise with on-ear sound isolating cushions. The incredibly soft ear cushions enclose the speakers around your ears for long-lasting wearing comfort. You will be able to clearly discern and enjoy all the sound details in your favourite music.

Built-in microphone



Your CitiScape headphones feature a built-in microphone so you can easily switch from listening to music to taking phone calls. It's a breeze staying connected with your music — and with the people who matter most to you.

Specifications

Sound

- Acoustic system: Closed
- Magnet type: Neodymium
- Voice coil: CCAW
- Diaphragm: Mylar dome
- Frequency response: 10–20,000 Hz
- Impedance: 32 Ohm
- Maximum power input: 30 mW
- Sensitivity: 103 dB
- Speaker diameter: 40 mm
- Type: Dynamic

Connectivity

- Cable Connection: Two-parallel, symmetric
- Cable length: 1.2 m
- Connector: 3.5 mm stereo
- Finishing of connector: 24k Gold plated
- Type of cable: OFC
- Compatible with: iPhone®, BlackBerry®, HTC, LG, MOTOROLA, Nokia, Palm®, SAMSUNG, Sony Ericsson

Packaging dimensions

- Number of products included: 1
- EAN: 69 23410 71328 2
- Packaging dimensions (W x H x D): 19.5 x 20 x 8 cm
- Gross weight: 0.4 kg
- Net weight: 0.176 kg
- Tare weight: 0.224 kg
- Packaging type: Blister
- Type of shelf placement: Both

Outer Carton

- Number of consumer packages: 3
- Gross weight: 1.502 kg
- Outer carton (L x W x H): 26.5 x 21.5 x 24 cm
- Net weight: 0.528 kg
- Tare weight: 0.974 kg
- GTIN: 1 69 23410 71328 9

Product dimensions

- Product dimensions (W x H x D): 17.5 x 18.5 x 7.5 cm
- Weight: 0.176 kg



Issue date 2012-03-23

Version: 3.6.6

12 NC: 8670 000 85525
EAN: 69 23410 71328 2

© 2012 Koninklijke Philips Electronics N.V.
All Rights reserved.

Specifications are subject to change without notice.
Trademarks are the property of Koninklijke Philips
Electronics N.V. or their respective owners.

www.philips.com