

NC80F product information sheet

Product Specifications

Fits most: 23" - 42" flat panels

Supports up to: 80 lbs (36.3 kg)

Mounting Profile: 1.57" (40 mm)

Universal & VESA compliant: 100x200 to 300x400

Mounting: Double-stud

Warranty: 5 years

Color: Black

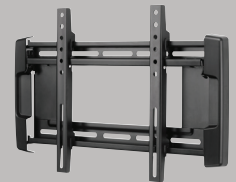
Product Benefits

- Universal rails for greater panel compatibility
- Lift n' Lock™ allows you to easily attach your flat panel to the mount
- Sliding lateral on-wall adjustment
- Open architecture provides easy access to in-wall wiring
- Improved locking system secures panel to mount and is easier to access behind the panel
- Locking bar works with padlock or screw
- End caps cover locking hardware and present a clean side view
- Rail hooks are padded to avoid metal-on-metal contact and reduce vibration
- Installation template for simple and accurate mounting
- Includes complete hardware kit

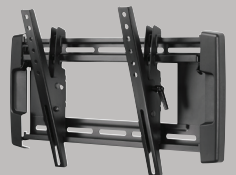


The NC80F features padded rail hooks to avoid metal-on-metal contact and reduce vibration

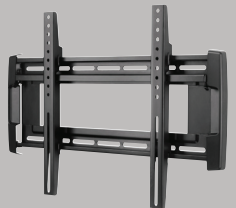
Series



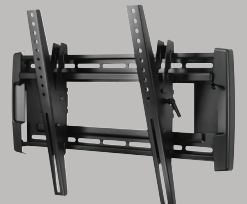
NC80F



NC80T



NC200F



NC200T



OmniMount, an innovator of A/V mounts and furniture for more than a quarter century, is the choice of professional installers and the brand most recommended by flat panel manufacturers. The New Classics Series puts a fresh spin on an old favorite, providing fixed, tilt and cantilever mounts with improved functionality – not to mention a new clean design. With enhanced functionality and a streamlined design, the NC80F is a reliable choice for any installation requiring a medium fixed mount with universal compatibility.



NC80F technical data sheet



OmniMount, an innovator of A/V mounts and furniture for more than a quarter century, is the choice of professional installers and the brand most recommended by flat panel manufacturers. The New Classics Series puts a fresh spin on an old favorite, providing fixed, tilt and cantilever mounts with improved functionality – not to mention a new clean design. With enhanced functionality and a streamlined design, the NC80F is a reliable choice for any installation requiring a medium fixed mount with universal compatibility.



Product Specifications

Fits most: 23" - 42" flat panels

Supports up to: 80 lbs (36.3 kg)

Mounting Profile: 1.57" (40 mm)

Universal & VESA compliant: 100x200 to 300x400

Mounting: Double-stud

Warranty: 5 years

Color: Black

Product Benefits

- Universal rails for greater panel compatibility
- Lift n' Lock™ allows you to easily attach your flat panel to the mount
- Sliding lateral on-wall adjustment
- Open architecture provides easy access to in-wall wiring
- Improved locking system secures panel to mount and is easier to access behind the panel
- Locking bar works with padlock or screw
- End caps cover locking hardware and present a clean side view
- Rail hooks are padded to avoid metal-on-metal contact and reduce vibration
- Installation template for simple and accurate mounting
- Includes complete hardware kit

	Stock Code	Packaging UPC	MC UPC
Americas	1004597-1	728901024412	728901717864
International	1004597INT-1	728901024412	728901717864

	Dimensions WxDxH Inches (mm)	Wt lbs (kg)
Product Box	11 x 23.8 x 4.1 (280x605x105)	8.4 (3.8)
Master Carton	11.8 x 24.2 x 9.1 (300x615x230)	17.6 (8)

Box Contents	Qty
Wall plate	1
Vertical rail	2
Security bar	2
Cover	2

Box Contents	Qty
Wall template	1
Complete mount installation hardware kit	1
Complete panel attachment hardware kit	1
Instruction manual	1

NC80F line drawings

